

## How to View the full-resolution scan for 2017 Data Collection

With the change in photography from color positive to negative film, during the 2015 data collection cycle, it will be necessary for staff to view the full-resolution scans for verification of features.

### MAP A NEW NETWORK DRIVE

A new network drive will need to be mapped to find the scans to be used for viewing during data collection. DO NOT USE the original scans stored on the J drive.

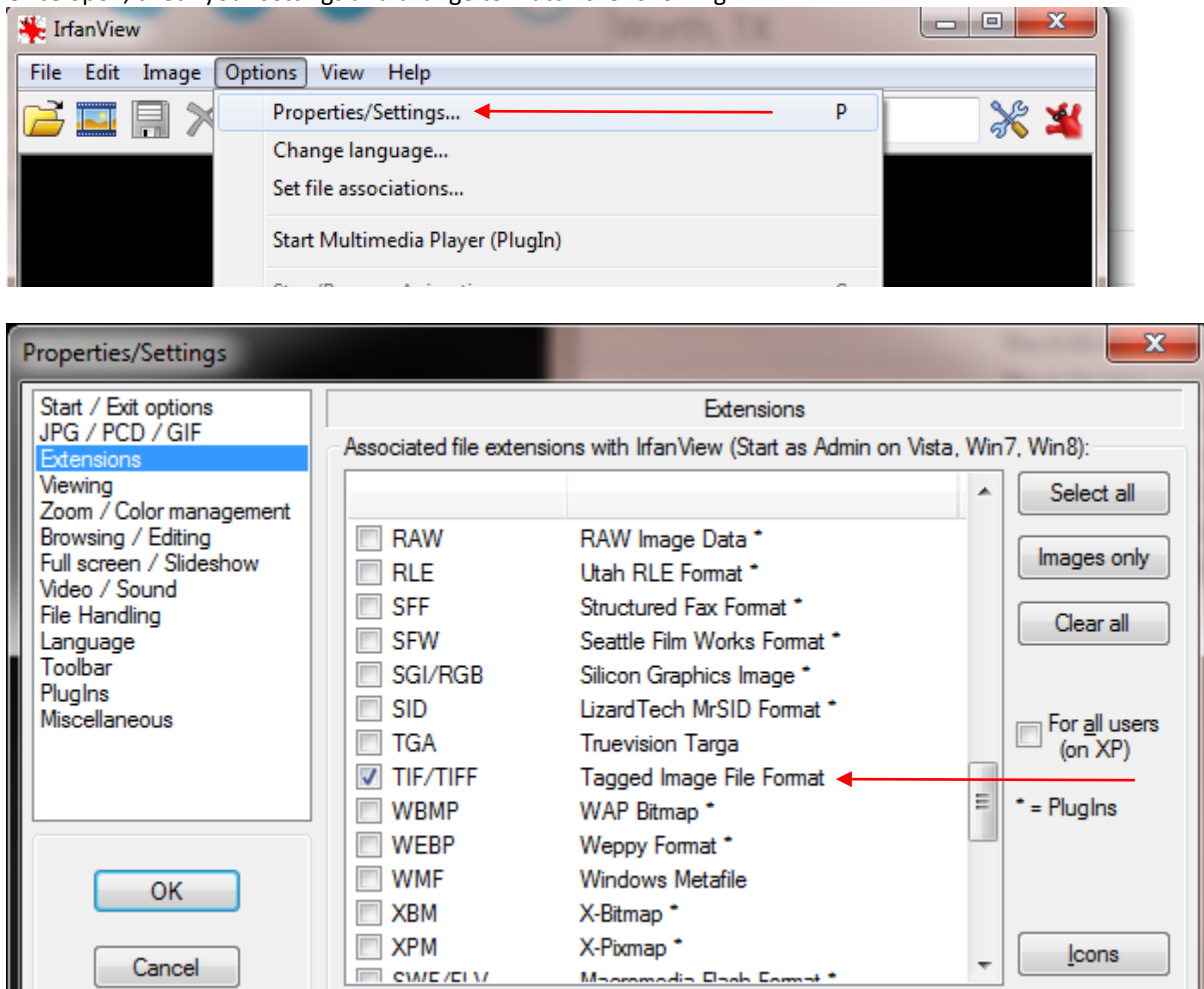
Go to Windows Explorer, click once on Computer, at the top of the screen click on Map network drive, choose Z:, then in 'Folder:' type [\\your server name\](#) and hit Browse. (Server names: CRSL - [\\txfortworts602\nrishare\HighResTiffs](#); ERSL - [\\ncgreensb4s603\nrishare\HighResTiffs](#); WRSL - [\\aitorpo43fp5\HighResTiffs](#)). Make sure 'Reconnect at logon' is checked. Click Finish.

### SETUP OF IRFANVIEW

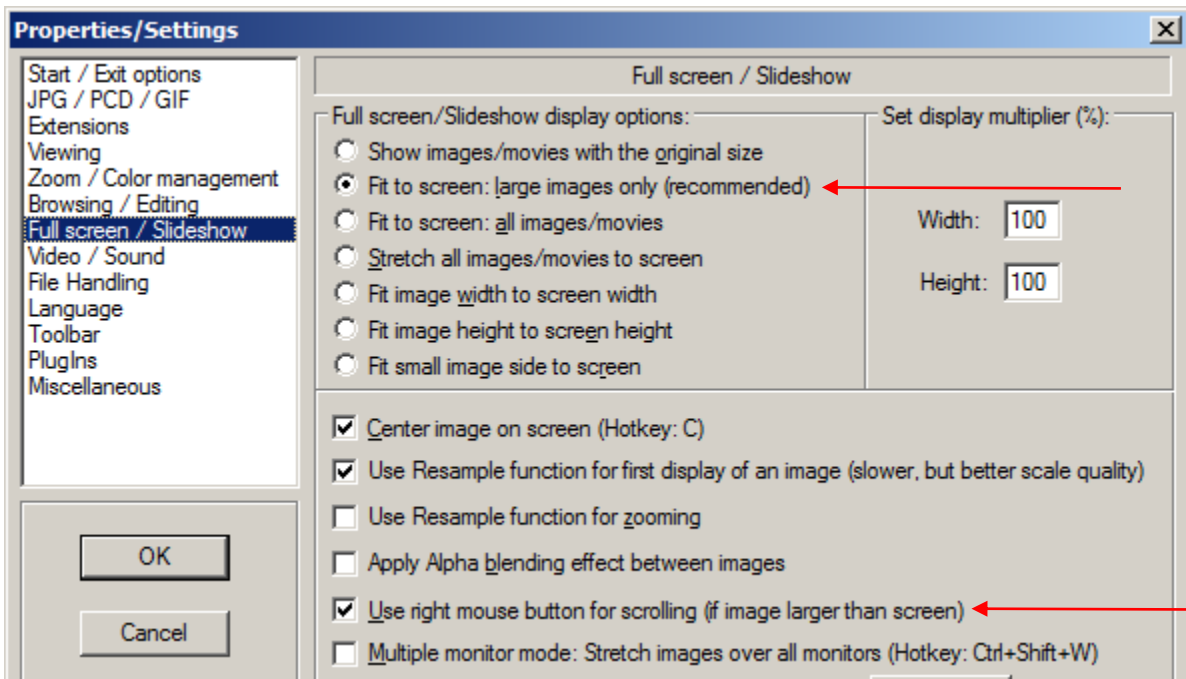
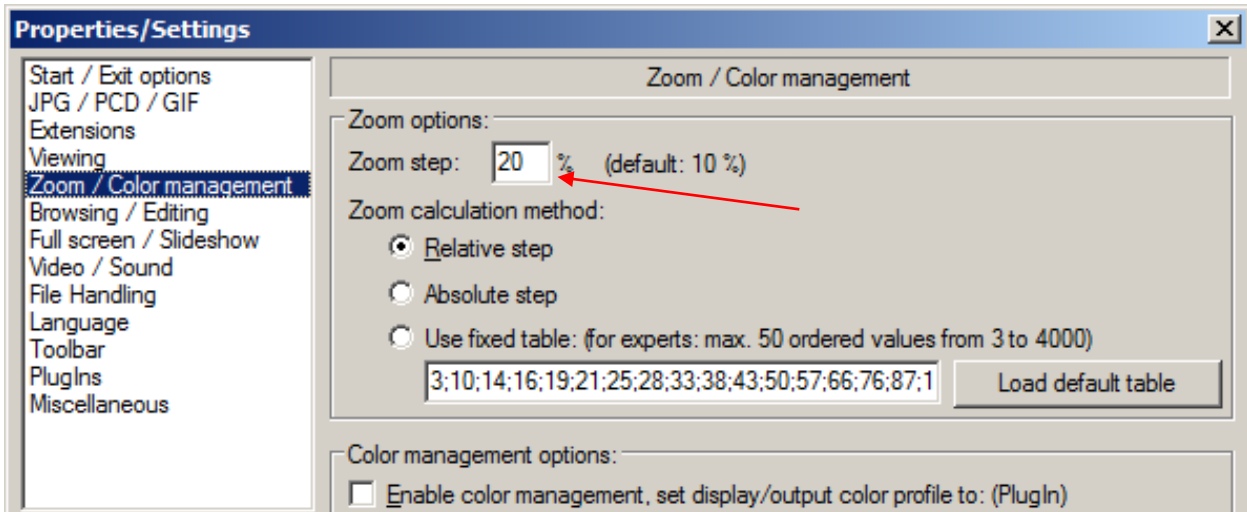
To best view the scans, a new program, IrfanView will be used. This program was installed on all machines at the same time as ERDAS 2015, so if you didn't get ERDAS 2015, you'll need to request this program be installed or use an alternative TEMPORARY method (as defined by your GTL). Once you have been upgraded to ERDAS 2015, IrfanView will be the method you will use to view scans.

To open IrfanView, go to Start Menu, All Programs, and find the IrfanView program.

Once open, check your settings and change to match the following:



## How to View the full-resolution scan for 2017 Data Collection



For the rest of the Settings screens, the defaults are acceptable. Click 'OK' after making the changes noted by red arrows.

### TWO METHODS FOR REVIEWING A SCAN

- 1) Open IrfanView
  - a) File, Open, Navigate to the appropriate directory
    - i) for viewing the tifs for data collection, go to HighResTiffs (Z:)\state\county\year (1) ie: Z:\AZ\04001\2015\scan\_04001\_010101A\_2015.tif
    - ii) Click on the appropriate filename and Open
  - b) Or you can navigate in Windows Explorer and drag/drop a file into the program
- 2) Navigate to the scan in Windows Explorer and double-click the filename of the scan you wish to open. IrfanView will open automatically.

## How to View the full-resolution scan for 2017 Data Collection

### **NAVIGATION IN IRFANVIEW**

Zoom - Hold the Cntrl key and use the scroll wheel on the mouse. This enables zooming in and out.

Pan - Click and hold the right mouse button, which then shows the Hand on-screen.

### **COLOR CHANGES IN IRFANVIEW**

If an image is too dark/light, adjustments can be made by going to Image, Color Corrections. Click OK after getting the image adjusted; this does not save any of the changes to the original file.

Do not make edits to these files, nor save any changes that might be made.